

KMB Containers



USA HEADQUARTERS
Schaefer Systems International, Inc.

Shipping Address
10021 Westlake Drive
Charlotte, NC 28273

Mailing Address
P.O. Box 7009
Charlotte, NC 28241

Tel: 704-944-4500
Fax: 704-588-1862

PACKAGING SYSTEMS DIVISION
USA, CANADA, MEXICO

1795 Alysheba Way
Suite 6104
Lexington, KY 40509

Tel: 859-294-5615
Fax: 859-294-5616
Toll Free: 888-SSI-TOTE
Email: packaginghelp@ssitote.net

Customer Service
Tel: 704-944-4583
Fax: 704-944-4582

Email: general@ssimail.net
www.ssi-schaefer.us

KMB Containers:

The Multi-Purpose Container

The System

An outstanding feature of the KMB container is its great versatility in terms of warehousing and materials-handling applications. The system can be extended, using more than 50 optional configurations. It offers alternative packaging for fragile items packed in cardboard boxes or foil packs. Empty containers can be nested, providing space-savings of up to 75% and thus reducing storage and transportation costs.

Advantages

- Space-savings of 75% when empty
- Temperature-resistant from -20° to +90°C
- Can be handled from any side with automatic stacking equipment
- Ergonomically-shaped handles
- Smooth surfaces for easy cleaning, with optional drainage holes
- Made of polypropylene
- Can hold contents weighing up to 110 lbs. (reinforced base required)
- Specially-designed bar code fields for protection against damage and soiling
- Run with optimum smoothness through conveyor systems
- Textured base provides grip when used with belt conveyors
- Can be supplied with various logos



Nested, Empty Containers Provide Volume Savings of Up to 75%



KMB Containers:

Attached Lid Containers

The System

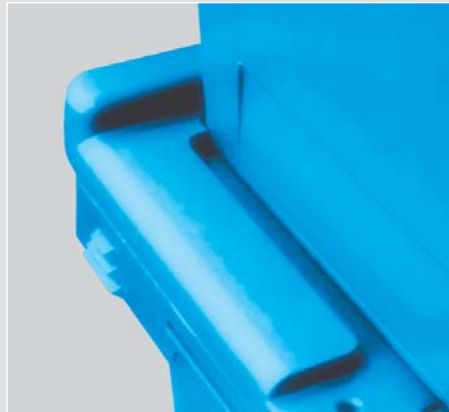
The version with a hinged two-section lid provides the best way of protecting your products from damage. An optional seal prevents unauthorized access to goods being transported. Lead seals can also be attached to provide additional security, as can reinforced case straps (using the grooves provided). The hinged folding lid permits secure stacking of different-sized KMB containers. The lids fold outward and lie vertically against the side of the container to permit nesting when empty.

Advantages

- Containers of different heights and sizes can be stacked on top of each other when lid is closed
- Optimum damage-protection for items being distributed
- High level of access control with optional lock of seal
- Additional security using band strapping in grooves
- Vertical position of open lid ensures maximum space saving when nested
- Hinged lids can be replaced individually
- Available with stacking bail



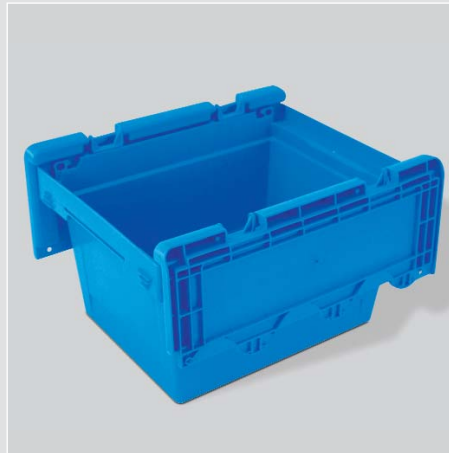
Different-sized containers can be stacked on top of each other.



Stacking of Lidded Containers



Packing-Strap Grooves



KMB Containers:

Containers with Bail Arm

The System

A conical shape with easy stacking need not be a contradiction in terms. Just fold back the bail arms and nest the empty containers inside each other, or pile full containers into a stack.

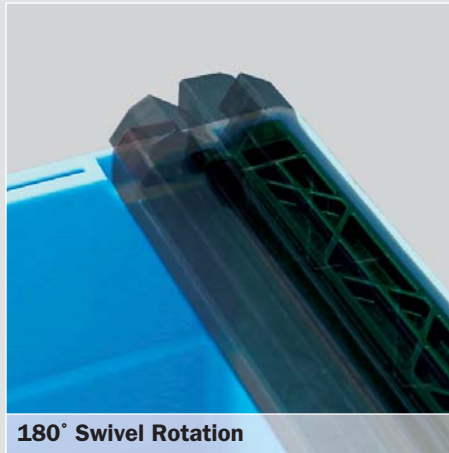
For safer handling, the frame is fitted with a special catch that prevents it folding up by accident.

Advantages

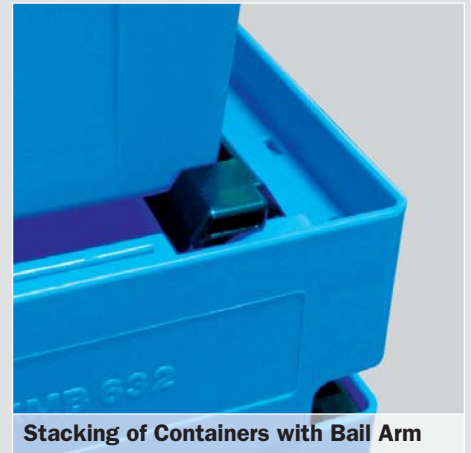
- The bail arms are easy to use
- The arms are made of highly robust fiberglass-reinforced material
- Safety catch provides high level of operating reliability and ease of handling
- The bail arm engages precisely in both normal and folded position
- No reduction in useful volume
- Each arm can be replaced individually



Stacking and Nesting Features



180° Swivel Rotation



Stacking of Containers with Bail Arm



KMB containers are ideal for use in pharmaceuticals, . . .



. . . and in the printing and publishing industries.



Reinforced Base



Nesting



Bail Arm

KMB Conical Returnable Containers (measurements in inches, unless specified)

Order #	Outside Dimensions			Outside Dimensions At Base	
	L	W	H	L	W
Nesting					
KMB422	15.7	11.8	8.8	12.6	9.4
KMB617	23.6	15.7	6.8	19.9	13.2
KMBB617 VB01*	23.6	15.7	7.6	—	—
KMB-B617 VB01*	23.6	15.7	7.6	—	—
KMB-DH617 VB01*	24.0	15.7	8.5	—	—
KMB622	23.6	15.7	8.8	19.9	13.2
KMB622 VB01*	23.6	15.7	9.5	—	—
KMB-B622 VB01*	23.6	15.7	9.5	—	—
KMB-DH622 VB01*	24.0	15.7	10.5	—	—
KMB627	23.6	15.7	10.7	19.9	13.2
KMB627 VB01*	23.6	15.7	11.5	—	—
KMB-B627 VB01*	23.6	15.7	11.5	—	—
KMB-DH627 VB01*	24.0	15.7	12.5	—	—
KMB632	23.6	15.7	12.7	19.9	13.2
KMB632 VB01*	23.6	15.7	13.5	—	—
KMB-B632 VB01*	23.6	15.7	13.5	—	—
KMB-DH632 VB01*	24.0	15.7	14.4	—	—
KMB642	23.6	15.7	16.7	19.9	13.2
KMB642 VB01*	23.6	15.7	17.4	—	—
KMB-B642 VB01*	23.6	15.7	17.4	—	—
KMB-DH642 VB01*	24.0	15.7	18.4	—	—
KMB832	31.5	15.7	12.7	27.8	13.2
2 Bail Arms KMB-B400					
KMB-B422	15.7	11.8	8.8	12.6	9.4
KMB-B617	23.6	15.7	6.8	19.9	13.2
KMB-B622	23.6	15.7	8.8	19.9	13.2
KMB-B627	23.6	15.7	10.7	19.9	13.2
KMB-B632	23.6	15.7	12.7	19.9	13.2
KMB-B642	23.6	15.7	16.7	19.9	13.2
KMB-B832	31.5	15.7	12.7	27.8	13.2
1 Folding Lid KMB-DH84, 10 Hinge Elements KMB-DS					
KMB-DH422	16.1	11.8	9.7	12.6	9.4
KMB-DH617	24.0	15.7	7.8	19.9	13.2
KMB-DH622	24.0	15.7	9.7	19.9	13.2
KMB-DH627	24.0	15.7	11.7	19.9	13.2
KMB-DH632	24.0	15.7	13.7	19.9	13.2
KMB-DH642	24.0	15.7	17.6	19.9	13.2
KMB-DH832	31.9	15.7	13.7	27.8	13.2



Hinged Folding Lid

* Container with ribbed base