

LTB Containers

**USA HEADQUARTERS
Schaefer Systems International, Inc.**

Shipping Address
10021 Westlake Drive
Charlotte, NC 28273

Mailing Address
P.O. Box 7009
Charlotte, NC 28241

Tel: 704-944-4500
Fax: 704-588-1862

**PACKAGING SYSTEMS DIVISION
USA, CANADA, MEXICO**

1795 Alysheba Way
Suite 6104
Lexington, KY 40509

Tel: 859-294-5615
Fax: 859-294-5616
Toll Free: 888-SSI-TOTE
Email: packaginghelp@ssitote.net

Customer Service
Tel: 704-944-4583
Fax: 704-944-4582

Email: general@ssimail.net
www.ssi-schaefer.us

LTB Containers

In addition to being extremely strong and durable, a number of proven design features have been incorporated in the LTB container. Newly designed hand holds for ergonomic manual handling. A specially designed bottom which imparts high rigidity for use in automated storage systems. Sizes stack and interstack. Locking lid securely stores and keeps contents dust free. Containers are prepared for shipping.



LTB Containers (measurements in inches, unless specified)

Order #	Outside Dimensions			Inside Dimensions			Capacity	Tare Weight
	L	W	H	L	W	H	Cubic Ft	lbs.
LTB4120	15.6	11.7	4.8	14.4	10.5	3.5	0.35	2.3
LTB4220	15.6	11.7	8.7	14.4	10.5	7.4	0.70	3.0
LTB6120	23.6	15.7	4.8	22.3	14.4	3.3	0.72	4.6
LTB6170	23.6	15.7	6.7	22.3	14.4	5.2	1.10	5.0
LTB6220	23.6	15.7	8.7	22.3	14.4	7.2	1.45	5.5
LTB6270	23.6	15.7	10.6	22.3	14.4	9.2	1.81	6.0
LTB6320	23.6	15.7	12.6	22.3	14.4	11.1	2.18	6.7
LTB6420	23.6	15.7	16.6	22.3	14.4	15.1	2.90	8.4
LTB8320*	31.5	23.6	12.6	29.6	21.7	11.6	4.77	11.6
LTB8420*	31.5	23.6	16.6	29.6	21.7	15.6	6.18	13.7

Note: Reinforced bottom is standard, 110 lbs. weight capacity

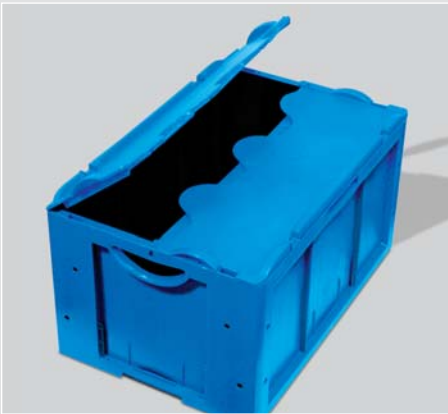
* Comes only with flat bottom, 40 lbs max weight capacity



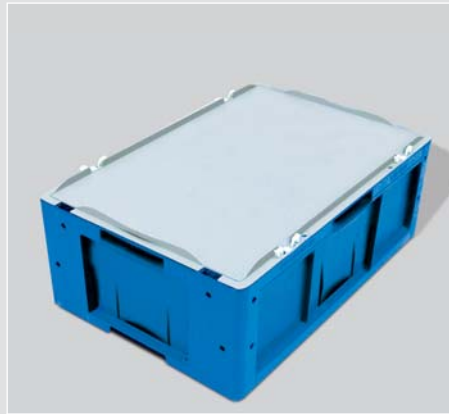
Hinged Lid



Reinforced Bottom



2-Part Hinged Lid



Detached Lid with Clips

LTB Advantages

- Made of polypropylene
- Available in blue and grey
- Rigid and robust
- Double-wall corner reinforcement
- Smooth inside walls
- Compatible with all Euro-dimension containers
- Reinforced bottom
- Weight capacity 110 lbs.
- Drainage holes optional
- Optional attached, 2-part hinged lid
- Hot stamping available